

# REF 2014: Unit of assessment summary data

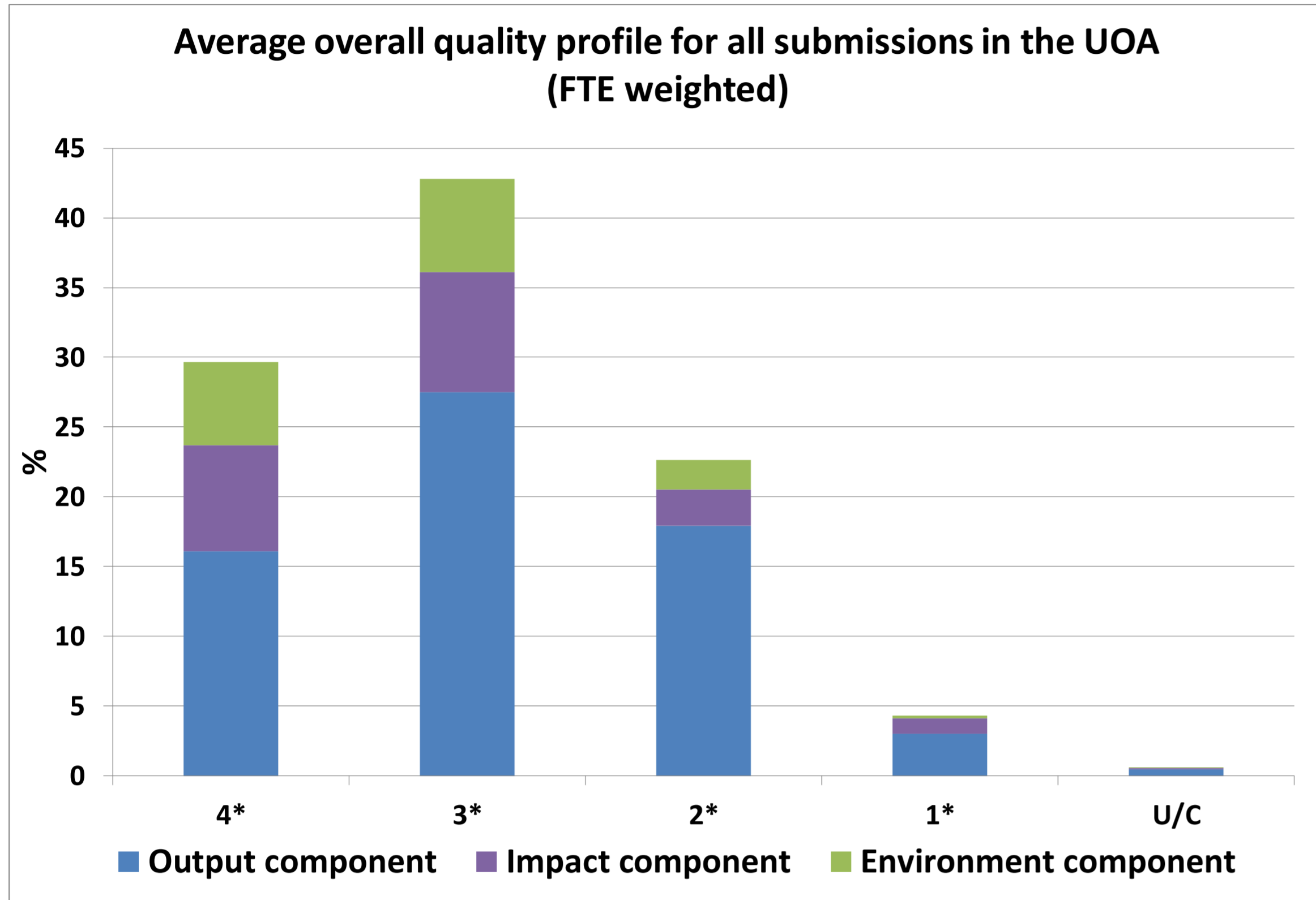
## UOA 28: Modern Languages and Linguistics

### Submission information

|  |       |
|--|-------|
| Number of submissions                          | 57    |
| Category A FTE staff submitted                 | 1,386 |
| Headcounts of category A and C staff submitted | 1,464 |
| Headcounts of early career researchers (REF1a) | 257   |
| Number of outputs submitted                    | 4,943 |
| Number of case studies submitted               | 192   |

| Doctoral research degrees awarded |         |         |         |         |
|-----------------------------------|---------|---------|---------|---------|
| 2008-09                           | 2009-10 | 2010-11 | 2011-12 | 2012-13 |
| 316                               | 314     | 317     | 336     | 412     |

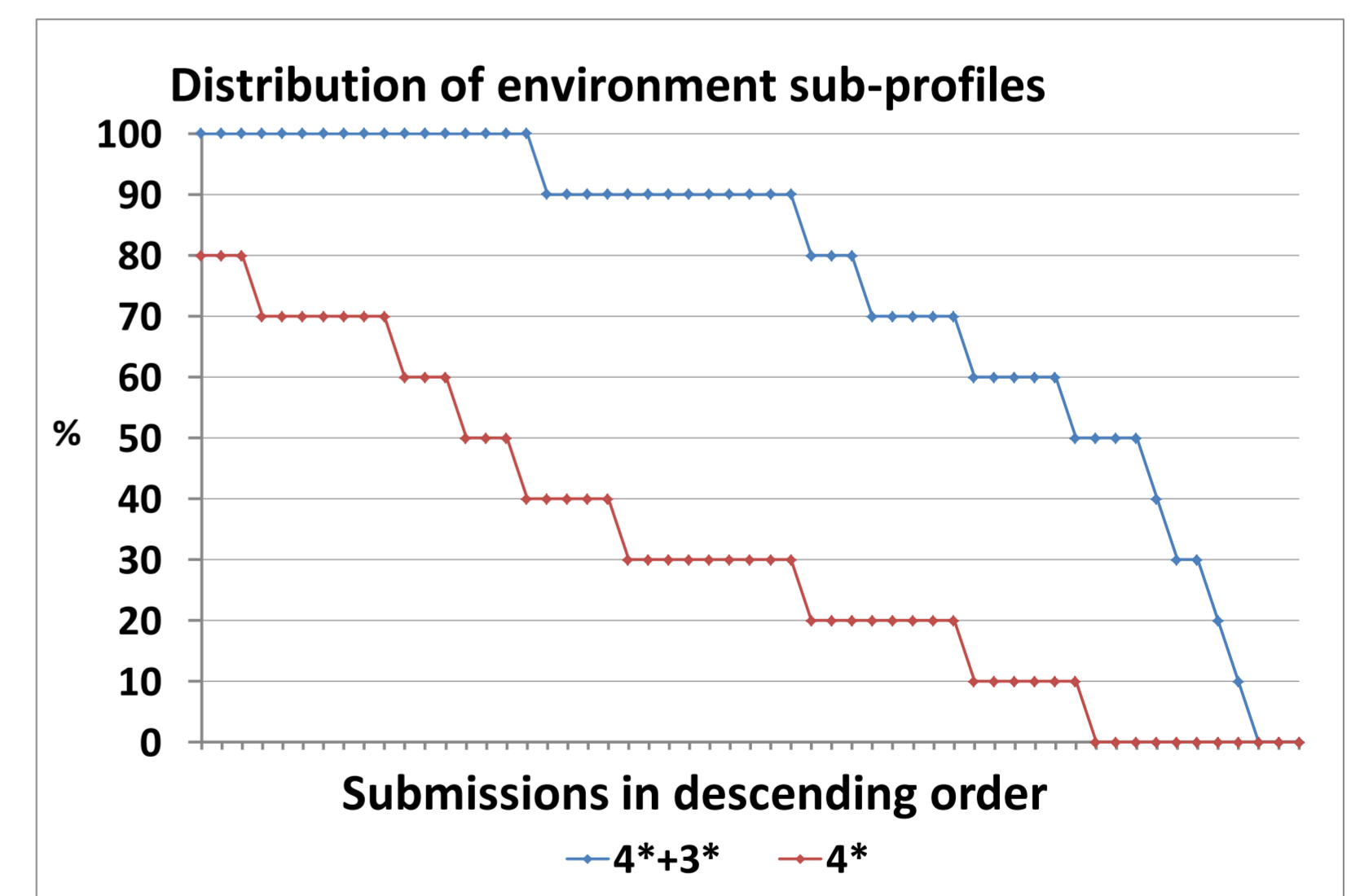
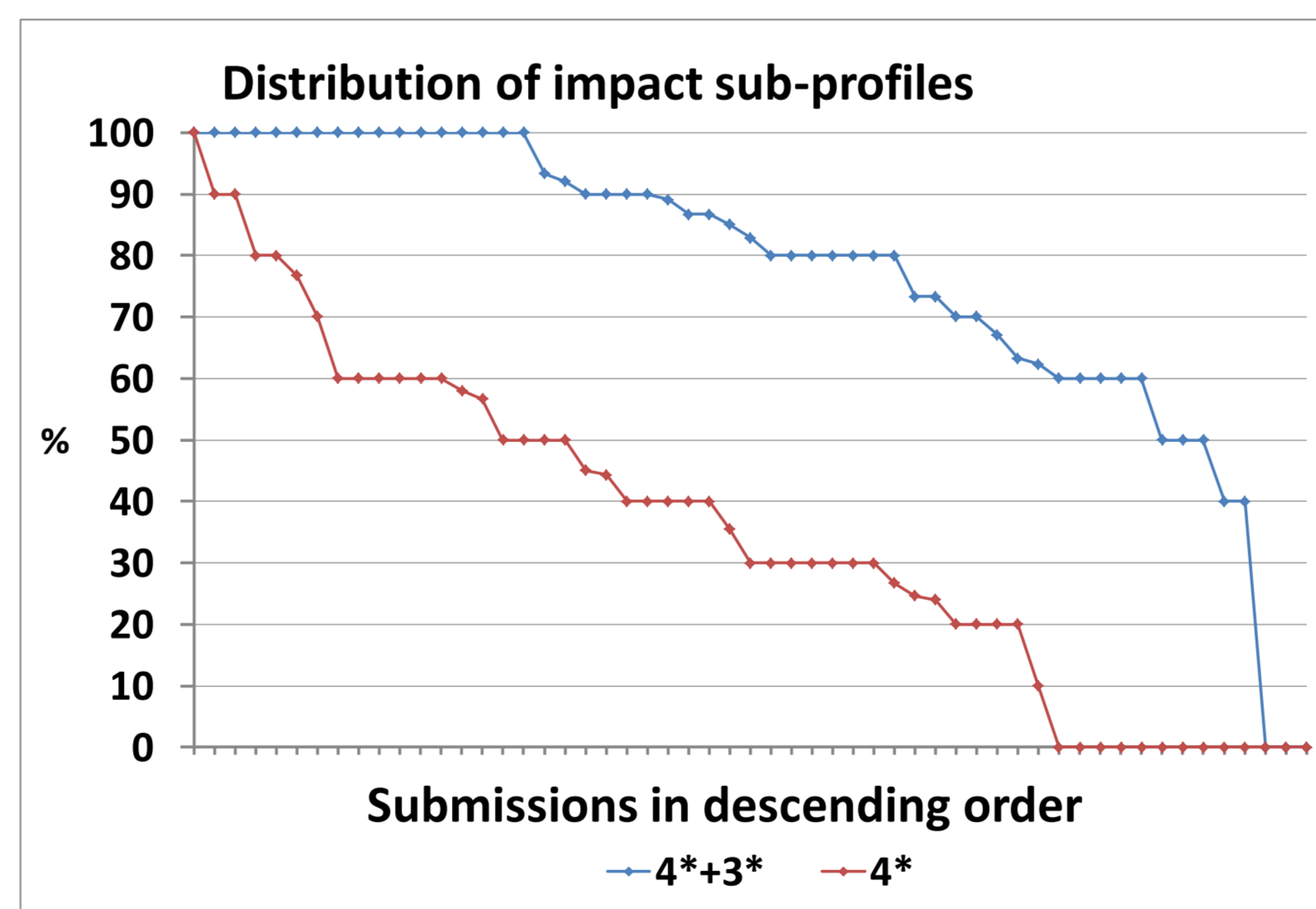
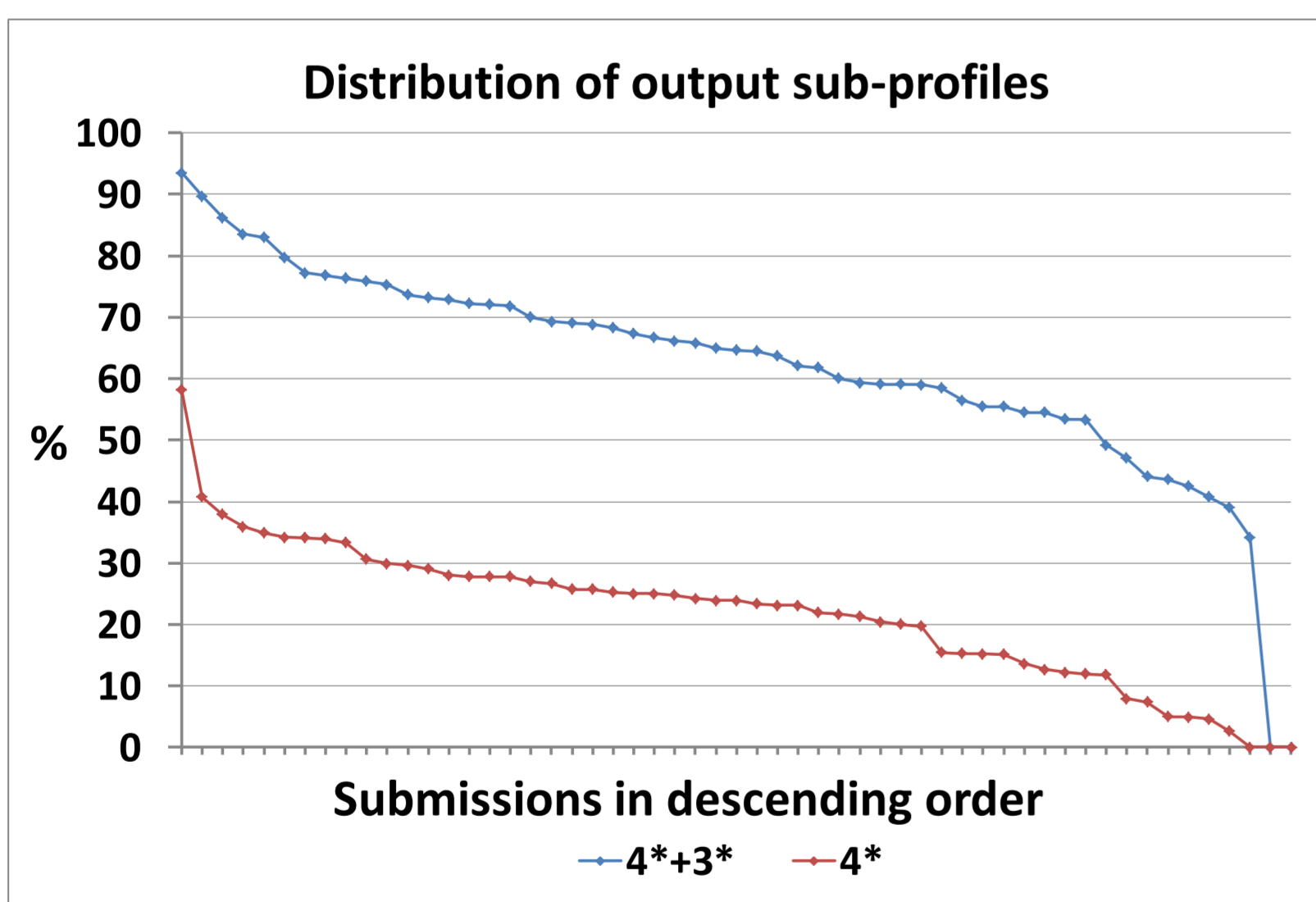
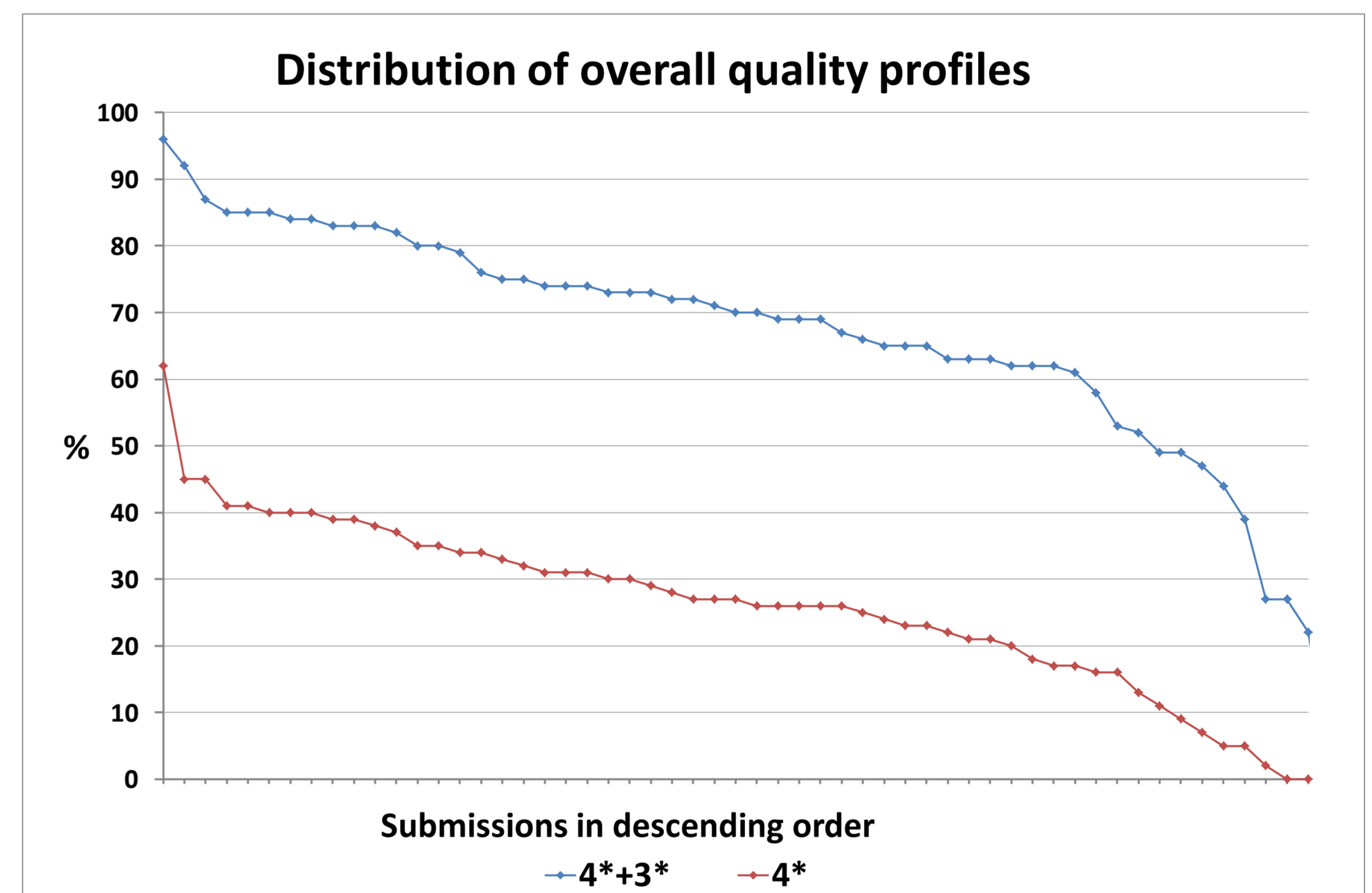
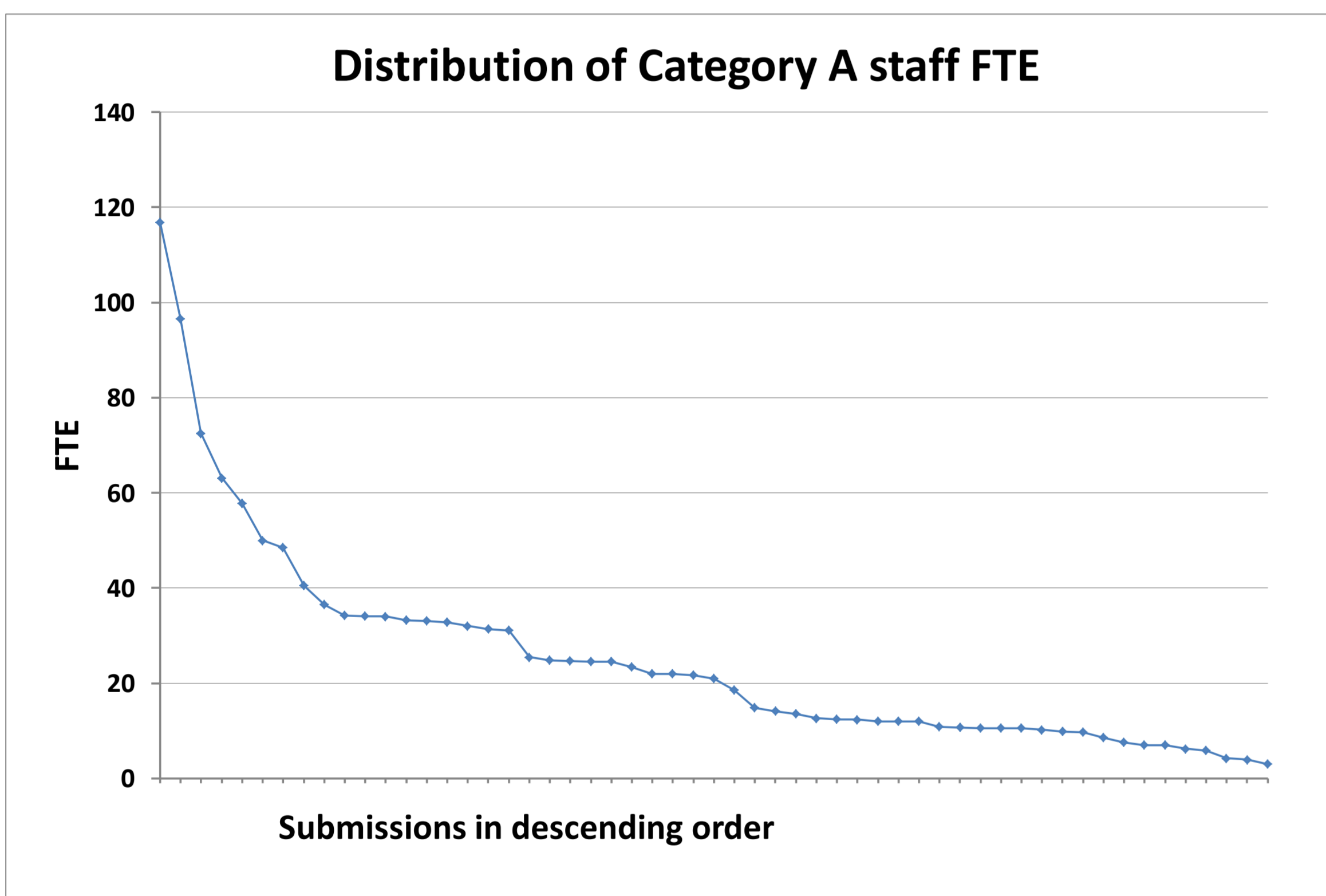
| Total external research income, including income-in-kind (£M) |         |         |         |         |
|---|---------|---------|---------|---------|
| 2008-09   | 2009-10 | 2010-11 | 2011-12 | 2012-13 |
| 19.03   | 19.51   | 20.13   | 20.32   | 20.45   |



**Average overall quality profile and average sub-profiles for all submissions in the UOA (FTE weighted)<sup>1</sup>**

|                    | 4*   | 3*   | 2*   | 1*  | U/C |
|--------------------|------|------|------|-----|-----|
| <b>Overall</b>     | 30   | 42   | 23   | 4   | 1   |
| <b>Outputs</b>     | 24.8 | 42.3 | 27.6 | 4.6 | 0.7 |
| <b>Impact</b>      | 37.8 | 43   | 12.9 | 5.7 | 0.6 |
| <b>Environment</b> | 39.8 | 44.8 | 14   | 1.3 | 0.1 |

### Distribution of submission size and of the results in the UOA<sup>2</sup>



<sup>1</sup>The rounding methodology described in Annex B of REF 02.2011, 'Assessment framework and guidance on submissions', has been used to produce the outcomes shown in the averages table.

The average overall quality profile and average sub-profiles have been adjusted for the number of Category A staff in each submission. Submissions with 3 or fewer staff (headcounts) are excluded from the calculation of the average sub-profiles.

<sup>2</sup>Each line in each chart below is plotted in descending order. As a result, the ordering of submissions in each chart -and the order of submissions shown on each line( 4\*+3\* and 4\*)- are not the same.